

Alaskan Way Viaduct & Seawall Replacement Program



Port of Seattle Commission
May 10, 2011

Presentation Topics

- Construction coordination
- Keeping people and goods moving during construction
- S. Spokane Street Viaduct Widening Project update
- S. Holgate Street to S. King Street Viaduct Replacement Project update

Construction Coordination Goals

- No surprises.
- Maintain public trust.
- Agencies continue to work together.
- Coordinate work to minimize impacts to the public.
- Identify potential conflicts.
- Keep users (bicycles, pedestrians, transit, freight, drivers) moving.
- Maintain business and resident access.
- Build upon past experience.



King County



**Washington State
Department of Transportation**



Keeping People and Goods Moving During Construction

- Roadway improvements: SR 519 and Spokane Street Viaduct Fourth Avenue off-ramp.
- Transit investments: Added bus service and strategies to encourage transit, carpools and vanpools.
- System reliability: New electronic and travel time signs on I-5; and new electronic message signs on SR 99 and other routes to downtown.



Increased service from West Seattle.



Driver information signs on I-5.

S. Spokane Street Viaduct Widening Project

- Completed construction of new eastbound off-ramp at Fourth Avenue S. and opened to traffic in August 2010.
- New westbound on- and off-ramp at First Avenue S. is scheduled to open fourth quarter of 2011.

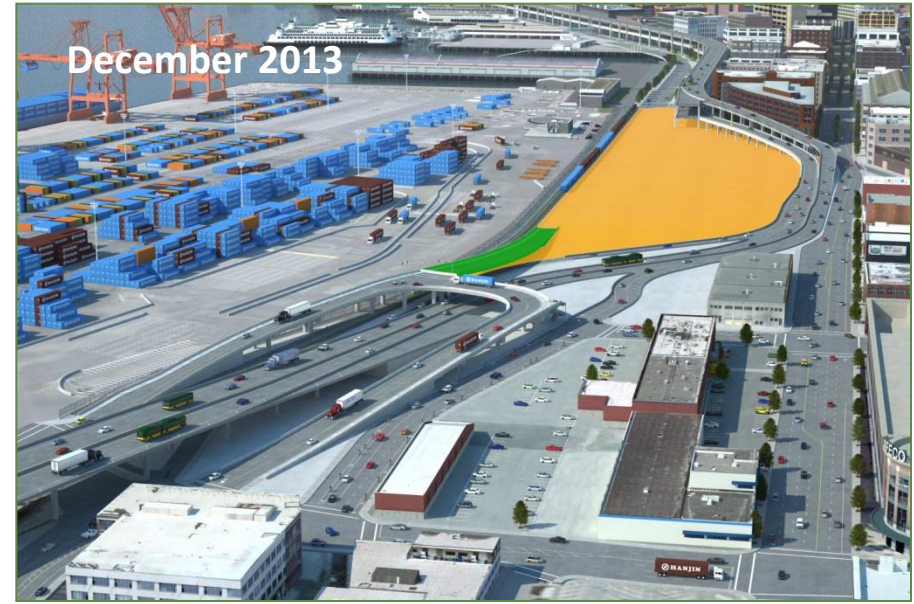


Construction Coordination Activities

- Coordinate and communicate daily on construction activities.
- Ensure access for all modes (pedestrians, bicycles, freight, transit, ferry riders, event attendees and vehicles).
- Plan coordination approach up to three years in advance.
- Predict location, duration and type of road closures.
- Reduce conflicts and minimize traffic and business impacts.
- Proactively engage media with latest information.



S. Holgate to S. King Viaduct Replacement



STAGING AREA

CONTINUING CONSTRUCTION

- Roadway will be complete in 2013.
- SR 99 remains open during construction.
- Reduced capacity on SR 99 south of S. King Street.
- South end viaduct demolition in early 2012.

Demolishing the SR 99 On-ramp

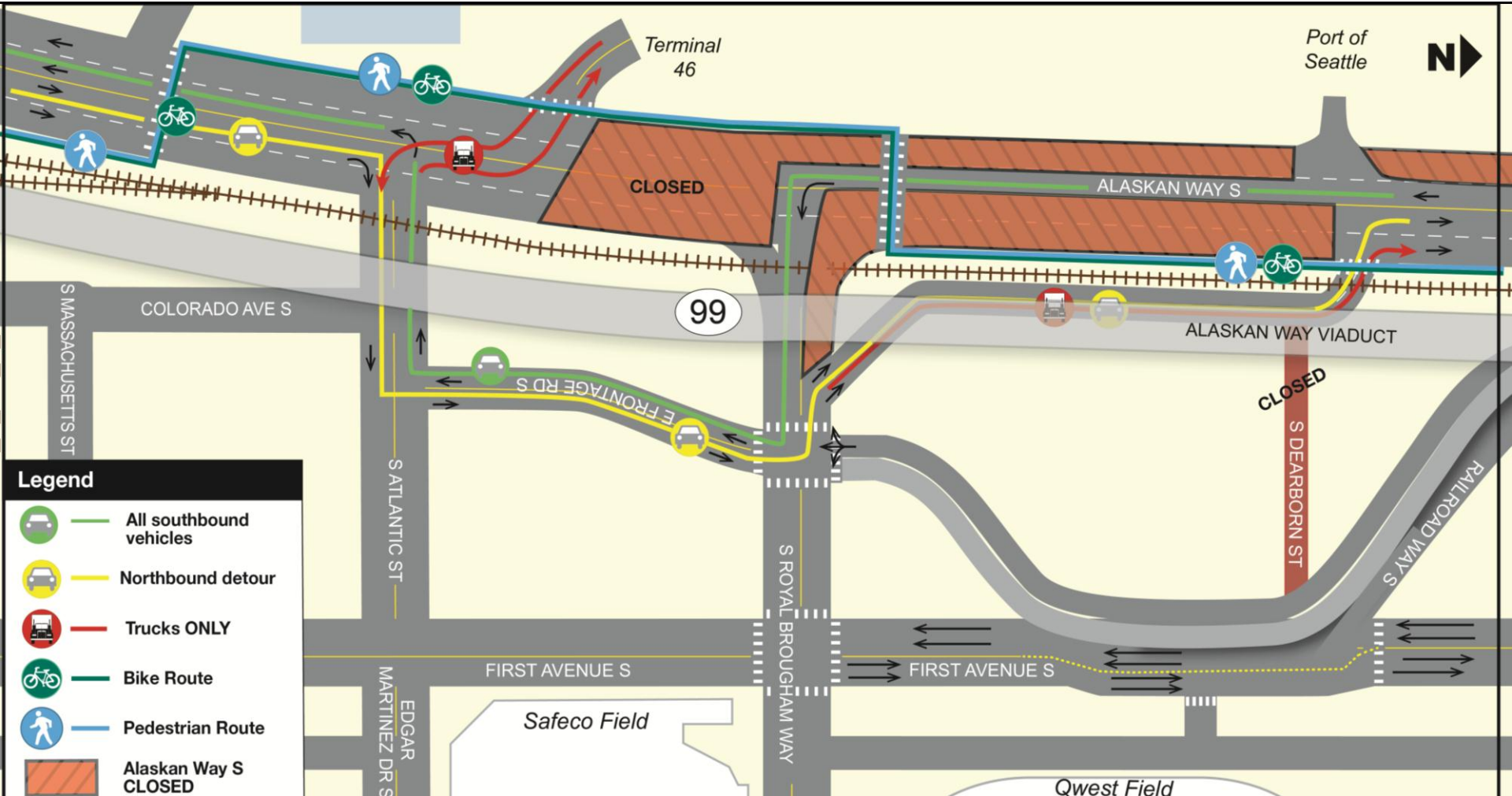


Alaskan Way S. Closure

- Alaskan Way S. closed in both directions between S. Atlantic Street and S. Royal Brougham Way.
- Closure in place until at least 2013.
- Allows relocation of BNSF railroad tail track to opposite side of street and completion of bypass bridge.
- Ongoing coordination with Port and stakeholders.



Alaskan Way S. Closure

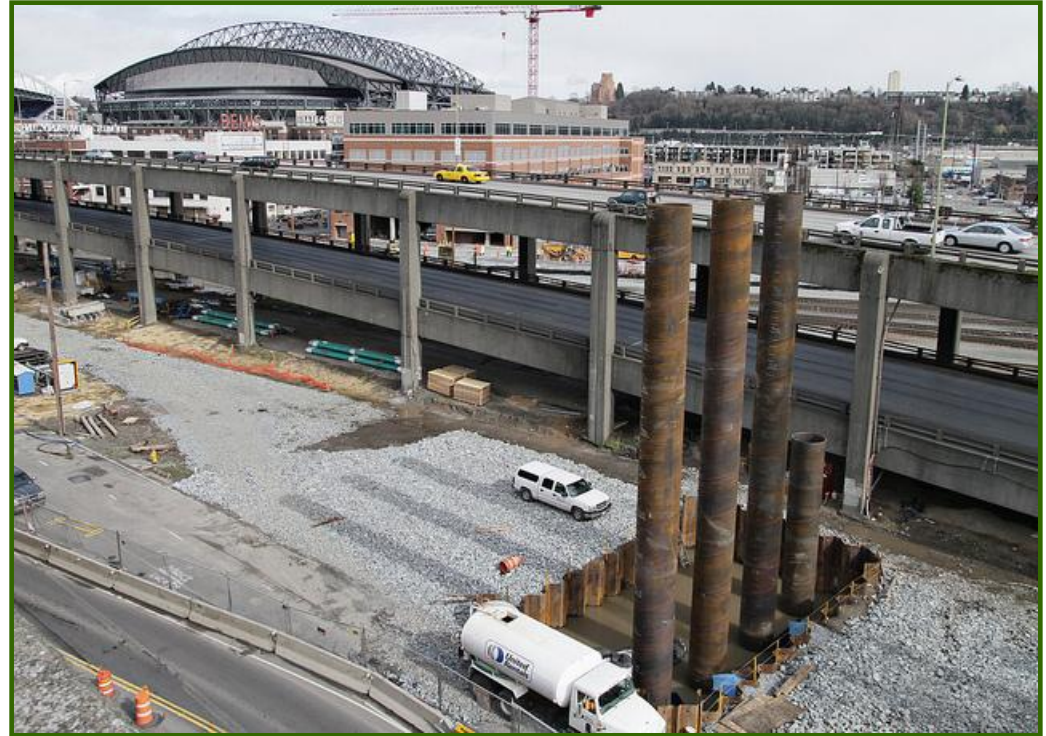


Building the SR 99 Detour



Driving Piles for the New SR 99 Roadway

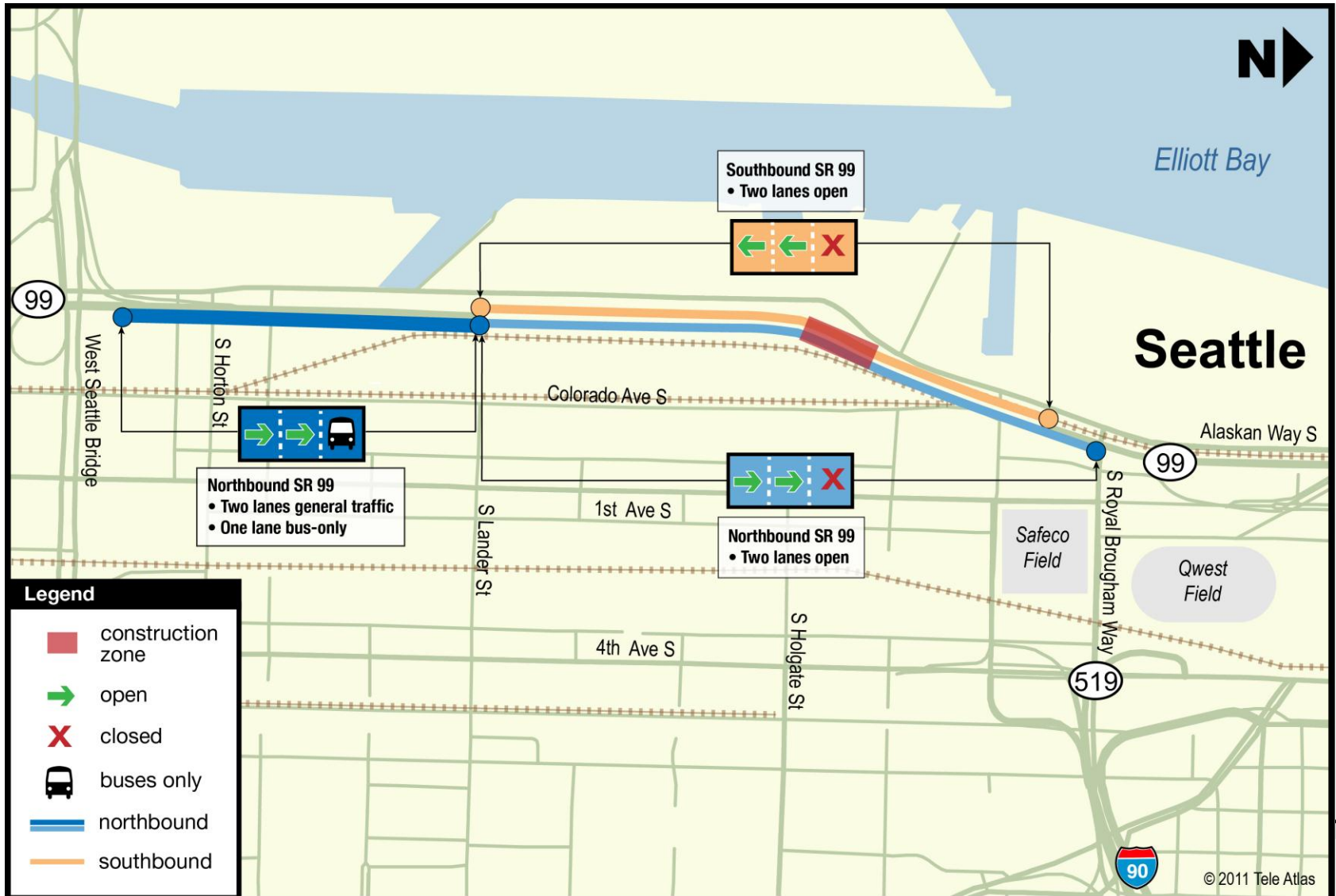
- Currently driving piles for new SR 99 southbound roadway.
- Starting in mid-May, crews will work in close proximity to the existing viaduct.
- Will reduce lanes on SR 99 between West Seattle Bridge and S. Royal Brougham Way to allow for this work.



Reducing SR 99 to Two Lanes in Each Direction

- Two northbound lanes, and a transit-only northbound lane.
- Two southbound lanes.
- May 14-15 viaduct closure to reconfigure.
- SR 99 configuration will remain in place until 2013 and possibly longer, until the central waterfront segment of the viaduct is replaced.

Reducing SR 99 to Two Lanes in Each Direction



Alaskan Way Viaduct and Seawall Replacement Program



Website:

www.alaskanwayviaduct.org

E-mail:

viaduct@wsdot.wa.gov

Hotline:

1-888-AWV-LINE

Back Pocket

Travelers Information Map

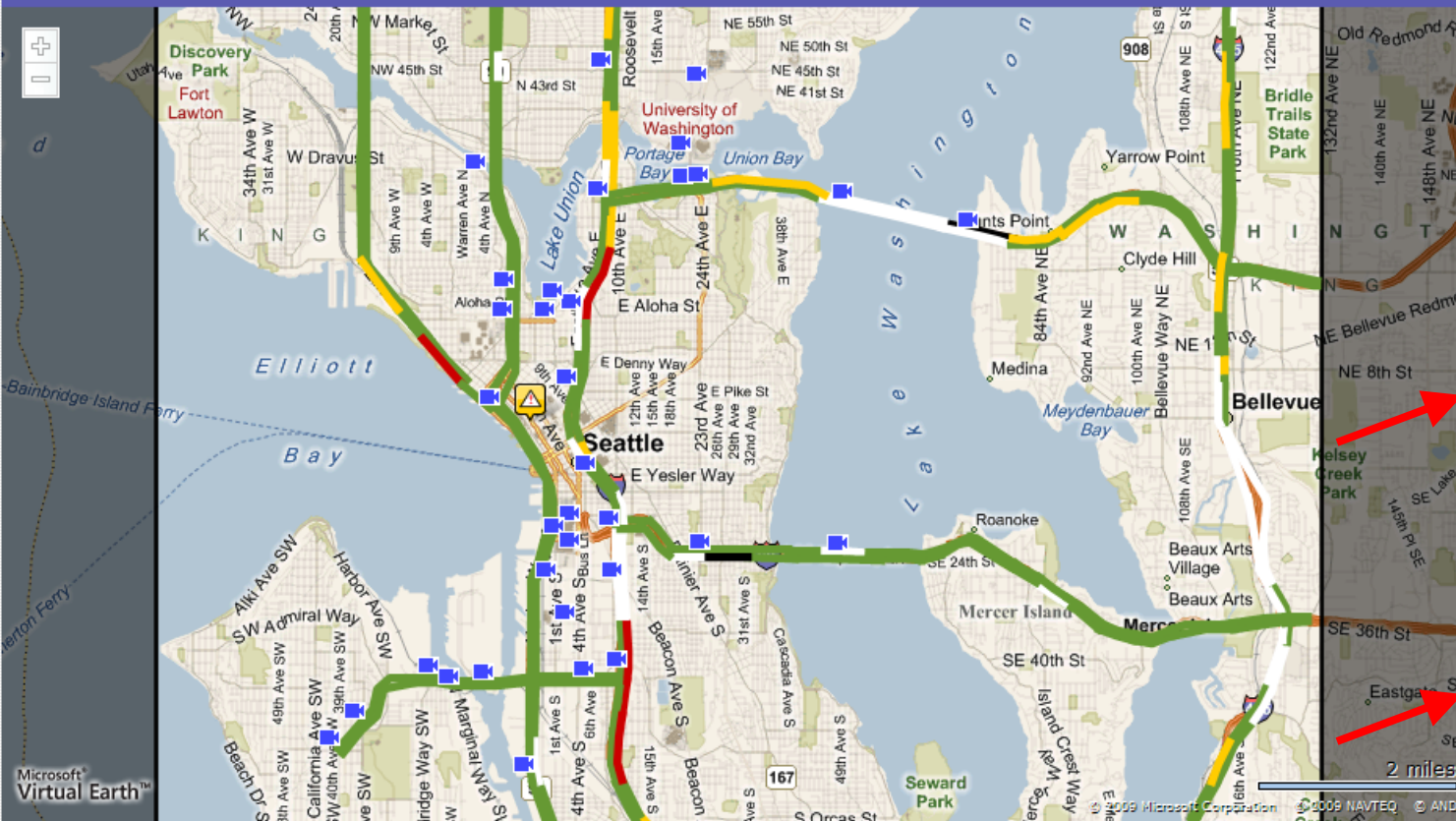
Seattle Department of Transportation

Home About Us Contact Us

A vibrant Seattle through transportation excellence

Grace Crunican, Director

Travelers Information Map



Find out before you go
This map is designed to serve the Seattle area by providing access to live traffic congestion information. (Best viewed in 1024 x 768 screen resolution)

Mouse over icons for more details.

SDOT and WSDOT Traffic Cameras

heavy light

SDOT Traffic Alerts

Special Event
SENECA ST
From: 4TH AVE
To: 2ND AVE
Lanes Affected: ALL
Description: May Day March and Rally--Rolling slow downs as group marches from Judkins Park to downtown via Jackson St, north on 4th to Seneca, then west to 2nd, returning south on 2nd to Jackson, then to Occident
Start Time: 5/1/2009 4:00 PM

Additional Resources

- [Map Feedback Form](#)
- [Amtrak](#)
- [Bellevue traffic map](#)
- [Community Transit](#)
- [Commute Seattle](#)
- [Greyhound](#)

WSDOT Seattle Area Traffic Map

News | Employment | Good To Go! | Contact Us | WSDOT Home

Washington State Department of Transportation

E-mail updates

Traffic & Cameras | Projects | Business | Environment | Maps & Data

You are here: [Home](#) > [Traffic](#) > [Seattle Area Traffic](#)

Seattle Traffic

- [Seattle Area Home](#)
- [Incidents](#)
- [Travel Times](#)
- [Travel Alerts](#)
- [List of Cameras](#)
- [Best time to leave](#)
- [Mobile Site](#)
- [Lake Washington](#)
- [Have Questions?](#)

State Travel Info

- [State View](#)
- [Weather](#)
- [Commute Options](#)

Local Traffic

- [Mount Vernon & Stanwood](#)
- [City of Bellevue](#)
- [City of Seattle](#)
- [King County](#)
- [Ferries](#)
- [Tacoma](#)

Traffic Maps

- [North](#)
- [South](#)
- [Bridges](#)

Seattle Area Traffic

Traffic Conditions as of: **May 04, 2010 3:03 PM PDT**

LEGEND

- Stop and Go
- Heavy
- Moderate
- Wide Open
- No Data
- No Equipment
- 📹 Video Clip
- 📷 Snapshot

EXPRESS LANES

- 5 North
- 90 East

Traveler Notice

Construction closures around Puget Sound

Drivers will want to plan ahead for construction that will close lanes on many state highways in the Puget Sound area, including I-5, I-405 and SR 520. [Get the details.](#)

Seattle Area Alerts 5/4/2010 3:01 PM

Blocking Incidents

- None reported

Construction Closures

- On SR 515 northbound from SR 516 to SE 240th St the right lane is closed due to roadwork.
- On I-5 southbound at SR 530 the right lane is closed due to maintenance.
- On SR 99 southbound from MP 24.5 to MP 23.5 the left lane is closed due to roadwork.
- On SR 20 eastbound & westbound from MP 134 to MP 174 in Okanogan County all lanes are closed.
- SR 18 westbound at West Valley Hwy right truck climbing lane closed until further notice

Special Events

Local intranet 100%